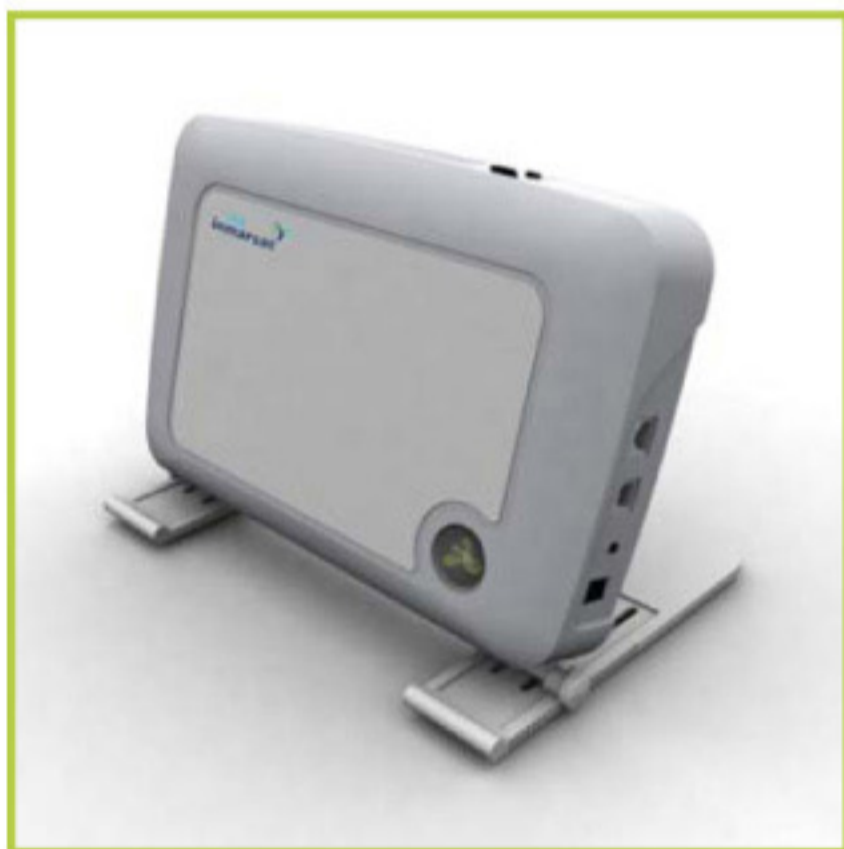


# Sabre I wideye™

## Key Features

- Connection to Inmarsat's Broadband Global Area Network (BGAN)
- Support both data & voice
- High data rate of up to 422.4Kbps
- Speech service to/from PSTN/2G/2.5G/3G terrestrial network
- Data service to/from Internet/Intranet, GPRS PLMNs, UMTS PLMNs and other BGAN user
- Built-in Bluetooth Access Point



### Broadband Satellite Communications

The Sabre I utilizes the Inmarsat-4 satellite to connect to its Broadband Global Area Network (BGAN), supporting voice and data communications via the satellite link.

### Speech

The Sabre I is built-in with Inmarsat low bit rate (4Kbps) AMBE+2 speech codec, supporting speech to/from PSTN/2G/2.5G/3G terrestrial network.

### Packet Switched (PS) Services

In addition to Circuit Switched Services, Sabre I Satellite Modem also supports Packet Switched Services to/from the Internet/Intranet, to/from GPRS PLMNs, to/from UMTS PS PLMNs, and to/from other BGAN users.

### Support Wide Range of PS Services

The Sabre I has been designed to support a wide range of PS switched services such as IP Telephony/Facsimile, Email & Messaging, Internet Access, Video Conferencing, Multimedia Streaming and other applications based on standard TCP/IP.

### Integrated Bluetooth Access Point

While supporting standard RJ11 and USB interface for circuit switched and packet switched services respectively, the Sabre I is also integrated with a Bluetooth access point, supporting wireless voice (via an optional Bluetooth handset) and data connection (via an optional Bluetooth data dongle).

### High Transportability

Designed with high transportability in mind, Sabre I Satellite Modem is enclosed in an A5-size casing that can be easily fit into your notebook bag.

### Interfaces & Built-in Functions

The Sabre I comes with a USB port for computer connectivity and an RJ11 port for telephone connection. In addition, it is also built-in with GPS, internal battery and internal BGAN antenna.

### Rugged & Stylish Design

Not only is Sabre I designed with a stylish outfit, it is also constructed with IP44 standard, and shall withstand most demanding application for most users.



# Specifications

## RADIO

### Frequency

Receive: 1525MHz - 1559MHz  
Transmit: 1626.5MHz - 1660.5MHz

### Channel Modulation

Receive: QPSK and 16QAM  
Transmit: pi/4 QPSK

### Antenna

Gain: 8.5dBic  
Pointing Loss: 0.3dB  
RX Sensitivity: -143dBW/m<sup>2</sup>

### Maximum Bearer Data Rate

Receive: 422.4Kbps  
Transmit: 252.8Kbps

## INTERFACE

### Universal Serial Bus (USB)

Standard: USB Specification 1.1  
Driver Support: Windows 98SE, Windows ME, Windows 2000, Windows XP, MAC OS 8.5 & above, Linux.

### 2-Wire Telephone (RJ11)

Standard: 600 Ohms CCITT Rec 473

## BATTERY

Transmit Time: 1 hour continuous transmission at data rate <= 72Kbps (without recharging)

Receive Time: 3 hour continuous receive without transmit requirement (without recharging)

Standby Time: 36 hours typ. (minimum)

## SUPPORTED TCP/IP APPLICATIONS

VPN Client: Based on PPTP, L2TP and IPSec  
VoIP: H.323 and SIP  
Email: POP3, SMTP and IMAP  
Messaging: Yahoo! Messenger, MSN Messenger  
Conferencing: Microsoft Netmeeting  
Web Browsing: HTTP and HTTPS

## ENVIRONMENTAL

### Ambient Temperature Operational

Operational: 0°C to +40°C  
Internal Battery: +5°C to +40°C

### Charging Temperature

0°C to +40°C ambient

### Storage Temperature

-20°C to +60°C ambient (include battery)  
-40°C to +80°C ambient (excluding battery)

### Operating Humidity

95% non-condensing at +40°C

© 2003 Addvalue Communications Pte Ltd. All rights reserved. Addvalue Communications may have pending patent applications, trademarks or registered trademarks, copyrights, or other intellectual property rights covering subject matter in this document. The furnishing of this document does not give you any license to these intellectual properties. Microsoft and Microsoft Windows are the registered trademarks of Microsoft Inc. Other trademarks mentioned in this document are the properties of their respective owners.

This material may contain unintended errors or omissions and is subject to change without notice. It is provided as is and without any express or implied warranties, including merchantability, fitness for a particular purpose and non-infringement. Addvalue shall not be liable for any special, indirect, incidental or consequential damages as a result of its use.